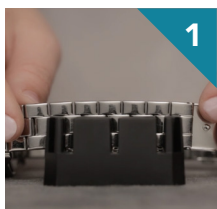


# HAIRPIN LINKS

If the watch bracelet only has one arrow it's a Hairpin Link. The pin itself resembles a hairpin. The arrow indicates in which direction to push the pin to remove the links. To remove pins from the band you'll need the *Bracelet Holder, Punch Tool and Hammer*.

## REMOVING LINKS



First position the bracelet in the holder with arrows pointing downward

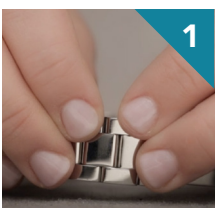


Insert the punch tool into the link and, with the metal end of the hammer, gently hammer until the hairpin exits the bracelet



Separate the links and repeat the process on the next link to be removed

## REASSEMBLING THE BRACELET



First position both sides of the bracelet together with arrows point upward



Tightly hold links together and gently add the narrow end of the pin into the bracelet  
Please note: that the V-Shape or wider end of the pin will be visible above the bracelet until hammered into place.



Insert the bracelet into the holder, using the silicone end of the hammer, gently hammer the hairpin into position until it is flush with the bracelet

# SMARTPIN LINKS

If the watch bracelet only has two arrows facing away from each other on opposing sides of the link, you are dealing with a Smartlink Pin. Similar to the hairpin except the pin can be removed from either side. To remove pins from the band you'll need the *Bracelet Holder, Punch Tool and Hammer*.

## REMOVING LINKS



First position the bracelet in the bracelet holder

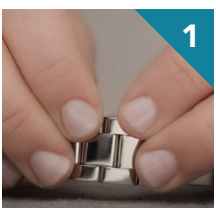


Insert the punch tool into the link and, with the metal end of the hammer, gently hammer and the pin will exit the bracelet



Separate the links and repeat the process on the next link to be removed

## REASSEMBLING THE BRACELET



First position both sides of the bracelet together



Tightly hold links together and add the pin into the bracelet

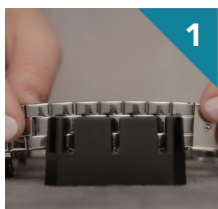


Insert the bracelet into the holder, using the silicone end of the hammer, gently hammer the pin into position until it is flush with the bracelet

# PIN & TUBE LINKS

If the watch bracelet only has no arrows it's a Pin and Tube bracelet. Named after the two components that make up the link - a pin and tube. Pin and tube links can be removed from either direction. To remove pins from the band you'll need the *Bracelet Holder*, *Punch Tool* and *Hammer*.

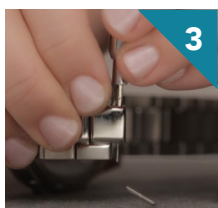
## REMOVING LINKS



First position the bracelet in the bracelet holder

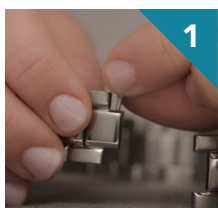


Insert the punch tool into the link and, with the metal end of the hammer, gently hammer and the pin will exit the bracelet



Separate the links and push the punch tool into the remaining links. Repeat the process on the next link to be removed

## REASSEMBLING THE BRACELET



First re-insert the tube. Then position both sides of the bracelet together.



Tightly hold links together and add the pin into the bracelet

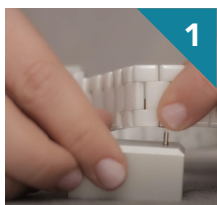


Insert the bracelet into the holder, using the silicone end of the hammer, gently hammer the pin into position until it is flush with the bracelet

# SCREW PIN LINKS

If the watch bracelet has small screws on the outside of the band your dealing with Screw Pin Links. A screw pin link consists of a screw that holds the pin in place. The screws indicate which links can be removed. To remove pins from the band you'll need the *Aluminum Block Tool*, *Flat head screw driver* and *Tweezers*

## REMOVING LINKS



First line up the head of the screw assembly with the blade on the Aluminum block. Place the block base on a hard flat surface with the blade still in place with the screw



Using the screw driver, turn the screw counter clockwise to loosen the pin



With the tweezers, remove the tube from the links. Repeat the process on the next link to be removed

## REASSEMBLING THE BRACELET



First position both sides of the bracelet together and re-insert the screw tube



Next, use the tweezers to place the screw into the link



With the flat-head screw driver, turn the screw clockwise until flush with the band

# SETTING TIME

Setting the time and date on a watch can be tricky. Below you will find an explanation on how to change the time for any type of analog watch. Remember to make sure the watch is set to the correct time before presenting it to the customer and after sizing the watch.

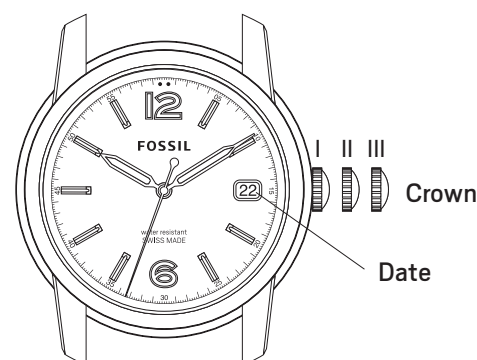
## ANALOG 3 Hands Date Movement

### SETTING THE TIME

1. Pull crown out to position III.
2. Turn crown clockwise to set hour and minute hands.
3. Return crown to position I.

### SETTING THE DATE

1. Pull crown out to position II.
2. Turn crown clockwise to set date.
3. Return crown to position I.



## ANALOG 3 Hands Day/Date Movement

### SETTING THE TIME

1. Pull crown out to position III.
2. Turn crown clockwise to set hour and minute hands.
3. Return crown to position I.

### SETTING THE DATE

1. Pull crown out to position II.
2. Turn crown clockwise to set date. Set to previous day.
3. Turn crown counter-clockwise to set weekday. Set to previous day.
4. Pull crown out to position III.
5. Turn crown clockwise to set hour and minute hands.
6. Return crown to position I.



## AUTOMATIC 3 Hands Date Movement

### Winding

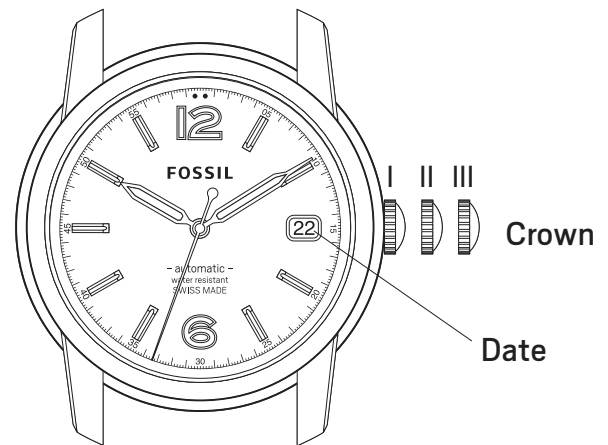
In crown position I, turn crown clockwise approximately 30 times. This powers the mainspring of the watch. The mainspring will be automatically wound by natural arm movements while wearing it on your wrist. The watch has a power reserve of approximately 38 hours.

### SETTING THE TIME

1. Pull crown out to position III.
2. Turn crown clockwise to set hour and minute hands.
3. Return crown to position I.

### SETTING THE DATE

1. Pull crown out to position II.
2. Turn crown clockwise to set date.
3. Return crown to position I.



### NOTE:

Do not change the date between 10pm and 2am. This is when the movement is in position to carry out the automatic date changes, any interface may cause damage to the movement.